



PRODUCT CATALOGUE

V1.0





CONTENTS

ABOUT US

PRODUCTS

RESOURCES

The CBS Story	4
Mission and Vision	5
Meet the Team	6
Meet Carly Our Core Customer	7
Industries We Serve	8
Solutions + Services	9
Commercial Printing Order Process	10
Packaging Order Process	11
Commercial Printing	12 - 19
Adhesive Products	20 - 21
Synthetic Products	22 - 23
Large Format	24 - 29
Display -POS	30 - 34
Retail Products	35
Calendars	36 - 37
Distribution & Fulfilment	38 - 39
Folding Cartons	40 - 41
Beverage Packaging	42
Presentation Packaging	43
Ready Meal Products	44
Corrugated Packaging	45
Promotional Products	46 - 47
Tradeshaw Packages	48
Delivery	49
FAQS	50 - 51
International Paper Sizes	52
Sustainability Policy	54
Bank Company Details	55

The CBS Story

CBS Printing is a family owned business which was established in 1977. With deep ties to local, state-wide, national, and international clients, we provide a seamless transition from design, print and distribution, to close the value gap for our clients as an end to end solution provider.

Our philosophy is simple: bring together the very best people, technology and processes in order to provide a complete package to our clients, with unsurpassed service and reliability.

Our reputation is built on satisfied customer referrals and long term relationships.



Mission

To make other brands great, giving them life through marketing.

Vision

To be the preferred print and fulfilment partner to marketing managers, through consistency & reliability.

Our Purpose

We exist to simplify and speed up the printing process to give you a hassle free experience.

8 Reasons

(Why CBS Printing?)

Marketing Professional Focus

- We are not just a general print company.
- We give you confidence in print and project execution.



1 Stop Shop

- From concept design, print and delivery.
- 1 company, 1 contact = accountability and project execution.



Rapid response service and delivery

- Quotes within 3 hours
- Instant online ordering
- Job tracking
- Guaranteed production time lines



Australian owned and operated

- In-house Australian manufacturing



Family owned business

- In operation since 1977
- Growth Partnerships - Your success is our business
- Dedicated account managers



Ready to go campaign packages

- Preformatted packs - campaign ready
- Industry, seasonal and product focused



Environmentally sustainable

- Soy based inks
- Paper is Forestry Sustainable (FSC)
- Solar powered manufacturing facility
- Biodegradable packaging



Preproduction Samples

- Digital hard copy sample prior to production run
- Printed physical assurance proof

Meet the Team



Our Sales Team

COMMERCIAL SALES TEAM



Todd Wilson
Sales Manager
todd@cbsprinting.com.au



Malcolm Wilson
Account Manager
malcolm@cbsprinting.com.au



Jason Knight
Account Manager
jason@cbsprinting.com.au



Tania Laws
Account Manager
tania@cbsprinting.com.au



Maylene Castillo
Customer Service Manager
maylene@cbsprinting.com.au

PACKAGING SALES TEAM



Joshua Wilson
Business Development Manager
joshua@cbsprinting.com.au



Lisa Milinkovic
Account Manager
lisa@cbsprinting.com.au

MEET CARLY OUR CORE CUSTOMER

COMMERCIAL CARLY IS THE MARKETING MANAGER.

Facts

- Commercial Carly is the Marketing Manager in an SME with a turnover between \$5m - \$50m (or 20 -100 employees). The company is typically a wholesaler / importer and ideally with a wholesale / reseller network.

Responsibilities

- Carly does it all –in some cases on her own, in other cases with a small team that might include a graphic designer and a digital marketing co-ordinator.
- She is responsible for maintaining the website, managing Google, supplying the sales network with selling materials, point of sale, running the socials, co-ordinating trade events, and every now and then –updating the catalogue.
- Carly will be also be asked to organise the companies printed collateral (stationery business cards etc) as well as corporate gifts for staff and customers.



Needs

Carly has a lot of balls in the air. She is **time poor and under pressure** to get results. However poor processes, communication, and project management can sometimes make projects **more complicated and difficult** than it needs to be.

Carly needs everyone to do their bit and land the campaign on time with maximum impact. **She needs partners she can rely on.**

Industries we serve



Agriculture



Education



Mining



Wholesale Trade



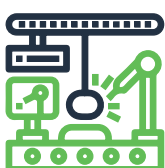
Home Builders



Automotive



Retail



Manufacturing



Construction



Food & Beverage



Personal Care & Cosmetics



Health Care



Council/Government



Waste Management



Event Management

We have the solution

CBS Printing offers a broad range of quality services from printing, and graphic design, right through to mail fulfillment and distribution.



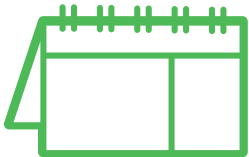
Commercial Print

CBS Printing offers low to high volume print runs by consolidating our digital and offset presses with warehousing and distribution services under the one roof.



Embellishing

CBS Printing compliments your printed catalogue or brochure through our finishing capabilities and embellishment options to provide your finished products with a distinctive touch which sets them apart.



Print Management

CBS Printing offers an end to end print management service with the facilities to Design, Print, Warehouse, Distribute, and most of all, manage a project from start to finish.



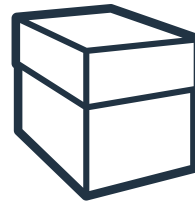
Mail Fulfillment

CBS Printing provides full mail house services including bar coding, folding and insertion, magazine wrapping and Australia Post lodgment on your behalf.



Proofing

CBS Printing offers to pre-flight your artwork files to check for any design discrepancies prior to imposition, pagination and proofing. This means that we check your file accurately to see if there are any problems with it.



Distribution and Warehousing

Fully integrated into our business is our in-house distribution service including: fulfillment and kitting, warehousing, inventory management and logistics Australia wide.



Promotional Items

CBS Printing offers a massive range of branded promotional and gift items. From pens to hats to drink bottles, we can fulfill any requirement you may have.



Online Print Portal

My Print Portal is a complete e-commerce and web2print portal. It allows you to access your quotes, orders, proofs and products in a personalised web storefront, with 24/7 access through a secure web browser environment.



Graphic Design

CBS Printing offers the services of an experienced in-house design team, equipped with the latest design technology and the creativity to turn any idea into a design master piece.

Commercial Printing Order Process

ACTIONS

STEPS

NOTES



1. Request for Proposal

Send through an email to sales@cbsprinting.com.au or to your Account manager with your inquiry.

Ensure that all detail is put into the initial proposal request to ensure we have enough detail to quote on the correct product. Please ensure you advise very clearly if the delivery timeframe date is critical.



2. Understanding the project

Account Manager will call and run through each project with you or book an appointment if required.

Account Manager will gather information around the project to ensure that the correct product is being used to fulfill its required purpose.



3. Submitting the Proposal

Proposal is created and submitted to you for approval.

Account Manager uses the information that you have provided to create a proposal with our estimating team.



4. Place Order

Email your Purchase Order and artwork to your Account Manager or to sales@cbsprinting.com.au

Artwork needs to be supplied print ready and can be shared via hightail link if it is a large file. <https://spaces.hightail.com/uplink/CBSPrinting>



5. Acknowledgement

You will receive an email from your Account Manager to acknowledge they have received your order.

No action required.



6. Order Confirmation

Within 12 hours of placing your order you will receive an emailed Order Confirmation.

Please check: Product / Product colour / Price / Estimated despatch date and delivery address are all correct. If not, please advise.



7. Prepayment

You will receive an invoice with prepaid terms to allow job to go to prepress for proof approval.

Once payment is completed please email remittance to your account manager and accounts@cbsprinting.com.au



8. Prepress Proof

You will receive a digital prepress proof within 24 hours of placing your order.

Please check that prepress proof is correct and advise if we are to proceed to print. If proof is not approved within 24 hours this will affect lead times.



9. Hard Copy Proofing

If a hard copy proof is allowed for, this will be despatched within 3-5 working days from digital prepress approval date.

Once you have received hard copy proof and are satisfied, please email support@cbsprinting.com.au to put bulk run into production.



10. Scheduling/ Production

Job gets scheduled and goes into production - lead time will vary depending upon the project but is typically around 5- 15 working days.

Lead time on certain projects may vary however your Account Manager will advise if this is the case at time of order. If you require a particular timeline, please advise at initial request for proposal.



11. Despatch

Upon despatch of your order, you will be emailed a Despatch Notification.

This email will have your tracking information and all details of your order and a delivery note.

Packaging Order Process

ACTIONS

STEPS

NOTES

	1. Request for Proposal	Send through an email to sales@cbsprinting.com.au or to your Account manager with your inquiry.	Ensure that all detail is put into the initial proposal request to ensure we have enough detail to quote on the correct product. Please ensure you advise very clearly if the delivery timeframe date is critical.
	2. Understanding the project	Account Manager will call and run through each project with you or book an appointment if required.	Account Manager will gather information around the project to ensure that the correct product is being used to fulfill its required purpose.
	3. Supply tray specifications	Supply tray or sample product and tray supplier along with codes.	Account Manager will use the products/codes provided to create knifeline and white samples for trial.
	4. Knifeline/Dieline creation Trial & Fit of samples	You will trial your product samples to confirm the fit functionality on your product.	Samples will be sent to you in the post for your trial and approval, within 48 hours - if knifeline has been confirmed correct.
	5. Approval of Sample and Paper Stocks	Send in a written email to Account Manager that sample and stock is correct.	Ensure that sample is thoroughly tested on product prior to approval.
	6. Epson Colour Matching Proof	An Epson print is provided for approval of colour when artwork is provided.	This is used predominantly when a PMS or corporate colour is a requirement or colour critical.
	7. Submitting Proposal	Proposal is created and submitted to you for approval	Account Manager uses the information that you have provided to create a proposal with our estimating team.
	8. Place Order	Email your Purchase Order and artwork to your Account Manager or to sales@cbsprinting.com.au	Artwork needs to be supplied print ready and can be shared via hightail link if its a large file https://spaces.hightail.com/uplink/CBSPrinting
	9. Acknowledgement	You will receive and email from your Account Manager to acknowledge they have received your order.	No action required.
	10. Order Confirmation	Within 6 hours of placing your order you will receive an emailed Order Confirmation and project timeline plan.	Please check: Product / Product colour / Price / Estimated despatch date and delivery address are all correct. If not, please advise.
	11. Prepayment	You will receive an invoice with prepaid terms to allow job to go to prepress for proof approval.	Once payment is completed please send an email remittance to your account manager and accounts@cbsprinting.com.au
	12. Prepress Proof	You will receive a digital prepress proof via email within 24 hours of placing your order.	If proof is not approved by 1pm the following business day from supply of proof this will affect your lead time.
	13. Scheduling	Job gets scheduled and goes into production. Leadtime will vary depending on the project, however standard lead times are dispatched 15 working days from prepress approval.	Lead time on certain projects may vary however your Account Manager will advise if this is the case at time of order. If you require a particular timeline, please advise at initial request for proposal.
	14. Despatch	Upon despatch of your order, you will be emailed a Despatch Notification.	This email will have your tracking information and all details of your order and a delivery note.



ANNUAL REPORT

A professional corporate annual report is a perfect presentation of a company. Annual corporate reports need to portray a high level of professionalism as they are not only offering valuable information about your company but also re-affirming your brand presence in the market. Ensuring that your report is well designed, easy to read and printed in high quality is a priority.

It's not just annual reports. Strategy documents, investment reports or corporate sales brochures are just a few of the reports we can help you with from design through to finished production.

Specifications

Sizes: A5, A4, Custom Size

Orientation: Portrait, Landscape

Page Numbers: Various

Recommended Paper Stocks: Gloss, Matt, Uncoated

Recommended Paper Thickness: 90gsm, 100gsm, 120gsm, 130gsm, 150gsm, 170gsm, 200gsm, 250gsm, 300gsm, 350gsm

Printing: CMYK, Spot Colour, Black and White

Coating: Aqueous coating (gloss, matt or soft touch) machine varnish

Embellishing: Matt Cello, Gloss Cello, Non-scuff Matt Cello, Velvet Cello, Foil, Spot UV, Debossing

Binding: Saddle stitched, PUR bound, Folded, Wiro bound

Finishing: Scored, Folded, Perforated, Hole drilled

Minimum Order Quantity: 100



BOOKLETS & CATALOGUES

Booklets & catalogues are the true and time tested way of presenting your company's products and services. They are often the key item in presenting your brand story to prospects and clients.

Catalogues can be utilised from company overviews, product & service booklets through to communications and promotional pieces.

There is almost no limit to what can be achieved from design through to print & finishing options on booklets. From corporate communications and promotional material to product catalogues, we have the experience and inhouse capability to deliver it all

Specifications

Sizes: DL, A6, A5, A4, A3, Custom Size

Orientation: Portrait, Landscape

Page Numbers: 8pp and upwards

Recommended Paper Stocks: Gloss, Matt, Uncoated

Recommended Paper Thickness: 90gsm, 100gsm, 120gsm, 130gsm, 150gsm, 170gsm, 200gsm, 250gsm, 300gsm, 350gsm

Printing: CMYK, Spot Colour, Black and White

Coating: Aqueous coating (gloss, matt or soft touch) machine varnish

Embellishing: Matt Cello, Gloss Cello, Non-scuff Matt Cello, Velvet Cello, Foil, Spot UV, Debossing

Binding: Saddle stitched, PUR bound, Folded, Wiro bound

Finishing: Scored, Folded, Perforated, Hole drilled

Minimum Order Quantity: 100

BROCHURES

Printed brochures are a powerful informative and keepsake marketing item. They can creatively show your company story to explain the features and benefits of your products & services.

A excellent designed & printed brochure on a premium paper stock will instantly give an impression of quality in your customers eyes.

Specifications

Sizes: DL, A6, A5, A4, A3, Custom Size

Orientation: Portrait, Landscape

Page Numbers: 1pp, 2pp, 4pp, 6pp

Recommended Paper Stocks: Gloss, Matt, Uncoated

Recommended Paper Thickness: 90gsm, 100gsm, 120gsm, 130gsm, 150gsm, 170gsm, 200gsm, 250gsm, 300gsm, 350gsm

Printing: CMYK, Spot Colour, Black and White

Coating: Aqueous coating (gloss, matt or soft touch) machine varnish

Embellishing: Matt Cello, Gloss Cello, Non-scuff Matt Cello, Velvet Cello, Foil, Spot UV, Debossing

Finishing: Scored, Folded, Perforated, Hole drilled

Minimum Order Quantity: 100



BUSINESS CARDS

Business Cards are still the ultimate expression of your brand and introduction tool in this digital age. Don't underestimate the power of introducing yourself with your details through a premium tangible branded card.

Specifications

Sizes: Standard Sizes (90mm x 55mm, 89mm x 54mm)

Orientation: Portrait, Landscape

Recommended Paper Stocks: Gloss, Matt, Uncoated

Recommended Paper Thickness: 90gsm, 100gsm, 120gsm,

Printing: CMYK, Spot Colour, Black and White

Coating: Aqueous coating (gloss, matt or soft touch) machine varnish

Embellishing: Matt Cello, Gloss Cello, Non-scuff Matt Cello, Velvet Cello, Foil, Spot UV, Debossing

Finishing: Scored, Folded, Perforated, Hole drilled

Minimum Order Quantity: 250





DESKPADS

Deskpads are a highly effective marketing tool that can be used as a calendar or simply as a pad and can allow your brand to be visible to your customers all year round.

Specifications

Sizes: A3, A2, Custom Size

Orientation: Portrait, Landscape

Page Numbers: Typically in 25s, 30s, 40s or 50s

Recommended Paper Stocks: Gloss, Matt, Uncoated

Recommended Paper Thickness: 90gsm, 100gsm

Printing: CMYK, Spot Colour, Black and White

Finishing: Scored, Folded, Perforated, Hole drilled

Minimum Order Quantity: 50



DOCKET BOOKS & CARBONLESS FORMS

Docket Books & Carbonless forms are a must have for any business that takes orders and produces delivery dockets and invoices on the go. Docket books & forms keep track of sales, order & deliveries. When you need an instant copy and record of a transaction or a checklist docket books are the perfect answer.

Used extensively for:

- Purchase orders, Quote Books, Invoice books, Timesheets, Safety Reports
- Vehicle Pre-start Books
- Mining
- Confined space books

Specifications

Sizes: DL, A6, A5, A4, A3, Custom Size

Orientation: Portrait, Landscape

Page Numbers: 50s, 100s

Recommended Paper Stocks: Text: NCR Paper, Cover: Crocodile Board

Recommended Paper Thickness: 90gsm, 100gsm, 120gsm, 130gsm, 150gsm, 170gsm, 200gsm, 250gsm, 300gsm, 350gsm

Printing: CMYK, Spot Color, Black

Finishing: Perforated

Extra: Hard Bound Taped, Soft Bound Stapled

Minimum Order Quantity: 5

ENVELOPES

Envelopes are an excellent and unique way to make that first impression. In a crowded digital market having a custom printed envelope will ensure your message is noticed and kept.

If you are looking for a way to differentiate your marketing or provide samples and even post small ecommerce products an envelope is a smart and effective way to achieve this.

Envelopes are also still extensively used as an ongoing office stationery product.

Specifications

Sizes: DL, DLX, C5, C4, B4, Custom Size

Envelope Options:

- Wallet or Pocket
- Peel and Seal, Lick and Stick, Self-Seal
- Window Face, Plain Face
- Secretive, Non-Secretive
- Overprint, Full custom printed / custom made

Recommended Paper Stocks: Gloss, Matt, Uncoated

Recommended Paper Thickness: 90gsm, 100gsm, 120gsm,

Printing: CMYK, Spot Colour, Black and White

Coating: Aqueous coating (gloss, matt or soft touch) machine varnish

Minimum Order Quantity: 100



MANUALS

Manuals are typically for presenting in printed format your company's products and services. They also are an important tool that can be used to inform and instruct your customer how to use or operate a product.

There is almost no limit to what can be achieved from design through to print & finishing options on manuals.

Specifications

Sizes: DL, A6, A5, A4, A3, Custom Size

Orientation: Portrait, Landscape

Page Numbers: 8 pages and upwards

Recommended Paper Stocks: Gloss, Matt, Uncoated

Recommended Paper Thickness: 90gsm or 100gsm text pages with 300gsm or 350gsm cover and backing pages.

Printing: CMYK, Spot Colour, Black and White

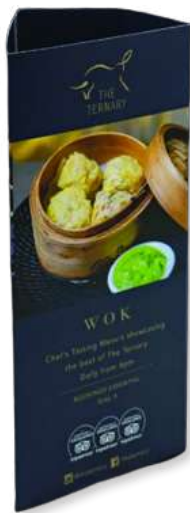
Coating: Aqueous coating (gloss, matt or soft touch) machine varnish

Embellishing: Cellogalze Options - Matt, Gloss, Non-scuff Matt, Velvet Cello, Foil, Spot UV, Debossing

Binding: Saddle stitched, PUR bound, Wiro bound

Minimum Order Quantity: 100





MENUS

Showcase your mouth watering food and beverages on a high quality printed menu.

With a vast variety of paper stocks and finishes to choose from our experience team will steer you in the right direction to make the right choice for your brand.

Create an impression with a textured stock or a nice finish that makes your client want to keep and stick on the fridge ready for their next order.

Specifications

Sizes: A6, A5, A4, Custom Size

Recommended Paper Stocks: Gloss, Matt, Uncoated paper, Laser

Recommended Paper Thickness: 110gsm, 130gsm, 170gsm, 200gsm

Printing: CMYK, Spot Colour, Black and White

Coating: Aqueous coating (gloss, matt or soft touch) machine varnish

Embellishing: Matt Cello, Gloss Cello, Non-scuff Matt Cello, Velvet Cello, Foil, Spot UV, Debossing

Finishing: Scored, Folded, Perforated, Hole drilled

Minimum Order Quantity: 50

NOTE PADS

Promotional printed notepads are always a fantastic way to keep your business in front of your customers.

Note pads are a practical and very economical way to keep your branding present. Use as sales promotional items, give away gifts and send out with each order.

Design your note pads with To-Do lists, actions check boxes, calendars and lines or grid to cater to the industry or use your clients have.

Never underestimate how much your prospects and clients love a notepad.



Specifications

Sizes: A6, A5, A4, A3, Custom Size

Orientation: Portrait, Landscape

Page Numbers: 25's, 40's, 50's

Recommended Paper Stocks: Uncoated

Recommended Paper Thickness: 90gsm, Back Board

Printing: CMYK, Spot Colour, Black and White

Finishing: Glued at head

Minimum Order Quantity: 100

NOTEBOOKS

Notebooks are a premium way to present your brand and be a useable practical marketing tool.

Custom printed covers with a quality wirebound spine, creates a book that you're proud to hand out as a gift that represents your brand.

It is recommended to include printed product or company inserts through out the Notebook for a standout marketing opportunity.

Specifications

Sizes: A5, A4, Custom Sizes

Orientation: Portrait, Landscape

Page Numbers: Recommended in books of 50 sheets

Recommended Paper Stocks: Uncoated

Recommended Paper Thickness: 90gsm

Printing: CMYK, Spot Colour, Black and White

Cover Coating: Aqueous coating (gloss, matt or soft touch) machine varnish

Cover Embellishing: Matt Cello, Gloss Cello, Non-scuff Matt Cello, Velvet Cello, Foil, Spot UV, Debossing

Finishing: Wirebound, Saddle stitched

Minimum Order Quantity: 100



PRESENTATION FOLDERS

Presentation folders are a professional way to present your company. They are a marketing tool to use to present product brochures to present quotes or proposals.

Specifications

Sizes: Standard Templates & sizes to fit: A4, A5.
Custom sizes & designs

Orientation: Portrait, Landscape

Recommended Paper Stocks: Gloss, Matt, Uncoated

Recommended Paper Thickness: 350gsm

Printing: CMYK, Spot Colour, Black and White

Coating: Aqueous coating (gloss, matt or soft touch) machine varnish

Embellishing: Matt Cello, Gloss Cello, Non-scuff Matt Cello, Velvet cello, Foil, Spot UV, Embossing

Finishing: Die cut, Glued, Clip Lock, Business Card Holder

Minimum Order Quantity: 100





POSTERS

Posters are a highly effective marketing tool to use for a promotion or a product launch. These are typically seen in a retail environment and have a great return on investment.

Specifications

Sizes: A4, A3, A2, A1, Custom Sizes

Orientation: Portrait, Landscape

Recommended Paper Stocks: Matt, Gloss, Uncoated

Recommended Paper Thickness: 200gsm, 250gsm

Printing: CMYK, Spot Colour, Black and White

Coating: Matt Varnish, Gloss Varnish

Embellishing: Matt Cello, Gloss Cello, Non-scuff Matt Cello, Velvet Cello

Finishing: Scored, Folded, Perforated, Hole drilled

Minimum Order Quantity: 25

LETTERHEADS

Letterheads are a powerful branded way to present your company's communications.

These can be used for handwritten messages or safely overprinted with laser copiers.



Specifications

Sizes: A4, Custom Sizes

Orientation: Portrait, Landscape

Recommended Paper Stocks: Uncoated

Recommended Paper Thickness: Standard - 100gsm,
Premium - 120gsm

Printing: CMYK, Spot Colour, Black and White

Embellishing: Embossing

Minimum Order Quantity: 250

WITH COMPLIMENTS

With compliments slips are a unique way in a digital world to still be able to provide a personalised & handwritten note. Use a premium with comps slip to stand out and show your personalised interest in your communications with all your message. It will be noticed and you will stand out and be remembered!

Specifications

Sizes: DL, Custom Size

Orientation: Portrait, Landscape

Page Numbers: 1pp, 2pp

Recommended Paper Stocks: Uncoated

Recommended Paper Thickness: 100gsm

Printing: CMYK, Spot Colour, Black and White

Embellishing: Embossing, Foil

Minimum Order Quantity: 250



TAB DIVIDERS

Tab Dividers are an effective way of breaking down your catalogue or binder into different segments to suit your company's different product divisions or requirements.

Specifications

Sizes: A5, A4, Custom Size

Orientation: Portrait – Run out Style Tabs, Island Tabs with 10mm or 13mm tabs

Page Numbers: 1 – 10 tabs

Recommended Paper Stocks: Gloss, Matt, Uncoated Polypropylene (0.38mm or 0.6mm thickness)

Recommended Paper Thickness: 350gsm white board

Printing: CMYK, Spot Colour, Black and White

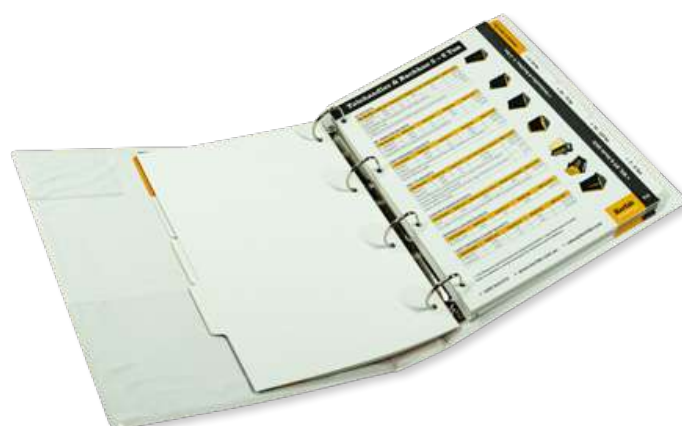
Coating: Aqueous coating (gloss, matt or soft touch) machine varnish

Embellishing: Matt Cello, Gloss Cello, Non-scuff Matt Cello, Velvet cello, Foil, Spot UV, Embossing

Finishing: Scored, Folded, Perforated, Hole drilled

Minimum Order Quantity: 50 sets of tabs

Is there a template/Knife line? Yes





STICKERS

Stickers are an effective branding tool to label products and ensure that your logo or details are clearly seen by consumers. These are cost effective and ensure your packaging looks unique.

Specifications

Sizes: DL, A7, A6, A5, A4, A3, Custom Size
Rectangle, Circle, Oval, Custom Shape

Orientation: Portrait, Landscape

Recommended Paper Stocks: Paper, White Vinyl, Clear Vinyl, Synthetic, Domed

Printing: CMYK, Spot Colour, Black and White

Coating: Aqueous coating (gloss, matt or soft touch) machine varnish

Embellishing: Matt Cello, Gloss Cello

Finishing: 10mm Peel tab, Slit back, Solid back, Die cut to custom shape

Minimum Order Quantity: 50

LABELS ON A ROLL

Labels on a roll are typically synthetic polypropylene or paper material and are used to put onto bottles or used within a company's production line. It is important to understand what direction you require your labels to come off the roll if they are being machine applied to a product. All standard core sizes of label rolls are 76mm to fit standard production lines.



Specifications

Sizes: DL, A7, A6, A5, A4, A3, Custom Size
Rectangle, Circle, Oval, Custom Shape

Orientation: Portrait, Landscape

Recommended Paper Stocks: Paper, White Vinyl, Clear Vinyl, Synthetic

Printing: CMYK, Spot Colour, Black and White

Coating: Aqueous coating (gloss, matt or soft touch) machine varnish

Embellishing: Matt Cello, Gloss Cello

Finishing: Supplied on rolls of 250, 500 or 1000 Qty with a standard core size of 76mm.

Minimum Order Quantity: 250 (1 roll)

LABELS ON A SHEET

Labels on a sheet are an effective branding tool to label products and ensure that your logo or details are clearly seen by consumers. These are cost effective and ensure your packaging looks unique.

Specifications

Sizes: DL, A7, A6, A5, A4, A3, Custom Size
Rectangle, Circle, Oval, Custom Shape

Orientation: Portrait, Landscape

Recommended Stocks: Paper, White Vinyl, Clear Vinyl, Synthetic

Printing: CMYK, Spot Colour, Black and White

Coating: Aqueous coating (gloss, matt or soft touch) machine varnish

Embellishing: Matt Cello, Gloss Cello

Finishing: 10mm Peel tab, Slit back, Solid back, Die cut to custom shape

Minimum Order Quantity: 50



PRINTED TAPE

Custom Packaging Tape is a very cost-effective way of getting your message across. Printed Packaging Tape is not just for sealing cartons, it can also be used for many other applications and purposes such as :

- Logo and brand promotion
- Handling advice
- Labelling cautionary messages
- Contents identification
- Advertising other products and services
- Temperate of storage labelling

Specifications

Roll Lengths: Custom printed tape can be made for hand and machine application. Hand rolls of printed tape are made in 66m or 100m lengths to fit on a handheld tape dispenser. Machine printed tape are made as 1000m rolls to suit an automatic carton sealing machine.

Tape Widths: Custom printed packaging tape can be made in various widths including 12mm, 18mm, 24mm, 36mm, 48mm, 72mm, 96mm and 144mm.

Recommended Stocks: Custom printed tape is available in Polypropylene (PP) and PVC material.

Polypropylene: Regular: • A cost-efficient alternative to PVC printed tape • Hot melt adhesive (Synthetic rubber adhesive) • Commonly used for general purpose carton sealing applications • When roll is unwound, PP makes more noise than PVC tape • Quick-release when pulled from roll.

PVC: Premium • PVC is a strong, heavy-duty tape • Adheres better to a wide range of surfaces compared to PP • Rubber adhesive • PVC tape is quieter on application than PP • PVC tape is performs better for long-term applications



Printing: • Print up to 3 colours on white, clear tape
• Fluro orange, yellow, red and green tape
• Flood coated/reverse print

Finishing: Supplied on rolls in cartons of 36 rolls/carton, 48 rolls/carton,

Minimum Order Quantity: 1 Carton (36 rolls)



SYNTHETIC TAGS

Synthetic Tags are a great product for temporary tagging of products and items and are tear resistant and waterproof. These can be used for outdoor and indoor use and are available with an eyelet and string on request and can also be written on with a permanent marker and pen.

Specifications

Sizes: DL, A6, A5, A4, A3, Custom Size

Orientation: Portrait, Landscape

Page Numbers: 1 or 2 sided print

Recommended Paper Stocks: Synco Synthetic

Recommended Paper Thickness: 95gsm(125um), 185gsm (254um), 245gsm (356um), 345gsm (510um)

Printing: CMYK, Spot Colour

Finishing: Eyelet and string, Hole punched, Die cutting

Is there a template/Knife line? Custom Knives available on request

Minimum Order Quantity: 250

SYNTHETIC POSTER

Synthetic Posters are a highly durable product for POS purposes, whether that be outdoor or indoor. The synthetic stock allows for greater outdoor use and is ideal for product launches or events.

Specifications

Sizes: DL, A6, A5, A4, A3, Custom Size

Orientation: Portrait, Landscape

Page Numbers: 1 or 2 sided print

Recommended Paper Stocks: Synthetic Polypropylene, Yuppo Synthetic

Recommended Paper Thickness: 95gsm(125um), 185gsm (254um), 245gsm (356um), 345gsm (510um)

Printing: CMYK, Spot Colour

Finishing: Hole punched, Die cutting

Is there a template/Knife line? Custom Knives available on request

Minimum Order Quantity: 25



SYNTHETIC SATCHELS

Synthetic Satchels are a commonly used product used for storing information or sales collateral material into. Being a synthetic material allows for greater durability while maintaining its purpose as an effective marketing tool.

Specifications

Sizes: A5, A4, Custom Size

Orientation: Portrait, Landscape

Page Numbers: 1 or 2 sided print

Recommended Paper Stocks: Synco Synthetic, Yuppo, Polypropylene

Recommended Paper Thickness: 95gsm(125um), 185gsm (254um), 245gsm (356um), 345gsm (510um)

Printing: CMYK, Spot Colour

Finishing: Cut to shape, Hole punched,

Embellishing: Matt Cello, Gloss Cello, Die cutting, Supplied flat or assembled

Is there a template/Knife line? Custom Knives available on request

Minimum Order Quantity: 50





PULL UP BANNER

Banners are a great way to advertise or market a product or your company at a tradeshow or exhibition. They are an easy to use product and can be quickly set up. They also come with a carry bag to allow for easy transportation.

Specifications

Sizes: 2000mm x 850mm

Orientation: Portrait

Paper Stocks : Vinyl, Polyester, Lustre

Stocks Thickness: 420g

Printing: CMYK

Finishing: Supplied in carry bag with premium base

Minimum Order Quantity: 1

POSTERS

Posters are a highly effective marketing tool to use for a promotion or a product launch. These are typically seen in a retail environment and have a great return on investment.

Specifications

Sizes: A4, A3, A2, A1, Custom Sizes

Orientation: Portrait, Landscape

Recommended Stocks: Matt, Gloss, Uncoated

Recommended Paper Thickness: 200gsm, 250gsm

Printing: CMYK, Spot Colour, Black and White

Coating: Matt Varnish, Gloss Varnish

Embellishing: Matt Cello, Gloss Cello, Non-scuff Matt Cello, Velvet Cello

Finishing: Flat packed

Minimum Order Quantity: 25



TEAR DROP BANNERS

Originally called the Flying Banner, today it is best known as the Teardrop flag or Teardrop banner and often referred to as a beach flag, wing banner or outdoor flag. Years after being invented and since the introduction of other styles, the teardrop is still the most popular promotional flag in Australia and still recognized as the best outdoor marketing tool for promoting a brand, launching a product, promoting an event or promotion.

Specifications

Sizes: 4 Sizes available – Small (2000mm Flag Height), Medium (2350mm Flag Height) , Large (2950mm Flag Height) and Extra Large (3900mm Flag Height)

Orientation: Portrait

Recommended Stocks: • Single Sided (85% see through - 115g knitted polyester) or Double Sided (Blockout)

• Double Sided flags available in three different levels of quality based on the needs of the advertiser:

- Budget - Three layers, 115g twin layer 100% polyester with centre blockout.
- Premium - Two layers, 110g silver coated satin blockout.
- Luxury - 250g blockout fused fabric.

Printing Process: Dye-Sublimation process for sharper text and images

Standard Inclusions: • Top quality pole set with strapping mechanism and constant tensioning fibreglass pole & end-mounted ball

- Lightweight, portable and easy to assemble
- All our flags come with a pole kit, carry bag, ground spike and printed flag



Additional Accessories: If required and on request at an additional cost, available are ground spikes, ground screw, budget crossfeet, deluxe crossfeet, heavyweight base, car base, hybrid waterbase, wall mount, water bag, flag carry bag

Minimum Order Quantity: 1

BOW FLAGS

Whenever you want to promote more than your brand and need to display a message too, then the Bow Banners are the perfect marketing tool for you to use. They tend to be the first choice when choosing flags as they are more versatile and offer greater printing area and viewing space for you to capture your audience's attention.

You may know this promotional flag as the feather banner, Bali flag, bow banner, bow flag or beach flag.

Specifications

Sizes: 4 Sizes available – Small (2300mm Flag Height), Medium (2900mm Flag Height) , Large (3700mm Flag Height) and Extra Large (4200mm Flag Height)

Orientation: Portrait

Recommended Stocks: • Single Sided (85% see through - 115g knitted polyester) or Double Sided (Blockout)

• Double Sided flags available in three different levels of quality based on the needs of the advertiser:

- Budget - Three layers, 115g twin layer 100% polyester with centre blockout.
- Premium - Two layers, 110g silver coated satin blockout.

Printing Process: Dye-Sublimation process for sharper text and images

Standard Inclusions: • Top quality pole set with strapping mechanism and constant tensioning fibreglass pole & end-mounted ball

- Lightweight, portable and easy to assemble
- All our flags come with a pole kit, carry bag, ground spike and printed flag



Additional Accessories: If required and on request at an additional cost, available are ground spikes, ground screw, budget crossfeet, deluxe crossfeet, heavyweight base, car base, hybrid waterbase, wall mount, water bag, flag carry bag

Minimum Order Quantity: 1



Standard Inclusions: If required and on request at an

- Top quality pole set with strapping mechanism and constant tensioning fibreglass pole & end-mounted ball
- Lightweight, portable and easy to assemble
- All our flags come with a pole kit, carry bag, ground spike and printed flag

Additional Accessories: If required and on request at an additional cost, available are ground spikes, ground screw, budget crossfeet, deluxe crossfeet, heavyweight base, car base, hybrid waterbase, wall mount, water bag, flag carry bag

RECTANGLE FLAGS

The Rectangular shaped streamers and signs provide a large print area to promote your products, services or event. Logos, images and text will really stand out with these streamers and make them eye catching and highly visible.

Our Promotional Flags are an effective outdoor advertising signage solution that offers portability and are simple to erect.

The Rectangle Flags is also known as the Flying Banner, Rectangular Flag, Block Signs or Straight Streamers, or Advertising Flags and can be clearly seen from any direction.

Specifications

Sizes: 4 Sizes available – Small (2600mm Flag Height), Medium 3200mm Flag Height) , Large (4150mm Flag Height) and Extra Large (5200mm Flag Height)

Orientation: Portrait

Recommended Stocks: • Single Sided (85% see through - 115g knitted polyester) or Double Sided (Blockout)

• Double Sided flags available in three different levels of quality based on the needs of the advertiser:

- Budget - Three layers, 115g twin layer 100% polyester with centre blackout.
- Premium - Two layers, 110g silver coated satin blackout.
- Luxury - 250g blackout fused fabric.

Printing Process: Dye-Sublimation process for sharper text and images

Minimum Order Quantity: 1



BANNER MESH

Bulk mesh banners are available in a 1,600mm or 1,800mm high rolls and supplied in 50m lengths. Our Mesh Banners are available in a number of quality grades. Our Budget 9x9 per square inch Mesh is lighter with wider wind holes per square inch and ideal for companies only looking to promote a Company colour and logo, generally popular with construction companies and sporting grounds. Our Premium mesh is constructed with smaller wind holes 12x12 per square inch and ideal for companies looking to promote an image or images that require better resolution.

Specifications

Sizes: Supplied at 1,600mm or 1,800mm high rolls and supplied in 50m lengths. Custom Lengths are available on request.

Stocks: PVC Banner Mesh – Budget and Premium

Printing: CMYK printing on 1 side

Finishing: Hemming and Eyelets every 1000mm Welded Edges, Eyelets and Kedar, Eyelets + Reinforcement, Eyelets + Velcro, Welded with zipper and kedar, Snap lock

Minimum Order Quantity: 1 Roll

Is there a template/Knife line? Artwork supplied as 10% of overall size of artwork or 100%

MEDIA WALL DISPLAYS

Our Signature Series Displays including our ever popular Media Wall Family, are the perfect solution for advertising your brand or solution in your showroom, at trade shows, presentations, conventions and business meetings as they are portable and easy to assemble. The high quality stretch polyester fabric banner is printed in full colour using vivid dye-sublimation inks and sewn into a “sleeve” which simply slides over the 32mm tube frame to create a flat and seamless graphic.

Specifications

Sizes: All standard Sizes are measured Width x Height x Depth and Custom Sizes are available on request.

- Small – 850mm W x 2000 H x 32mm D
- Shopping Centre – 1500mm W x 1500mm H x 32mm D
- Office Backdrop – 1500mm W x 2300mm H x 32mm D
- Sponsor – 2000mm W x 2000mm H x 32mm D
- Medium – 2500mm W x 2300mm H x 32mm D
- Large Expo Wall – 3000mm W x 2300mm H x 32mm D
- Extra Large – 4500mm W x 2300mm H x 32mm D
- Mega Wall – 6000mm W x 2300mm H x 32mm D

Orientation: Portrait or Landscape

Recommended Stocks:

- Printed on our High Quality 260g soft knitted stretch polyester fabric Material or our popular 300g blackout tension fabric
- Single sided or double sided printing available
- Non-glare Matte finish making it perfect for indoor applications and photography
- Available in range of different standard sizes and styles (Custom sizes available)
 - Straight
 - Curves
 - S-Bend
 - U-Shape

Printing Process: Latex Printing process for sharper text and images. Can be printed on one side or two sides.

Standard Inclusions:

- Anodised aluminium 32mm tubular frame with steel feet & interconnecting clips
- Top Corners available rounded or squared
- Comes complete with a black fitted Oxford Fabric carry bag
- Easy step by step assembly

Additional Accessories: If required and on request at an additional cost, available are LED Lighting and fitting available

Minimum Order Quantity: 1





TABLE COVERS

Table Throws will provide your clients with high impact, low cost signage for their market stall, trade event or exhibition. Our standard sized table covers are designed to suit the standard “Bunnings” trestle tables

Specifications

Sizes: (W, D, H)

- 4 Foot - 1,220 x 610 x 740mm
- 6 Foot - 1,835 x 762 x 736mm
- 8 Foot - 2,440 x 762 x 737mm

Finishing Options: Loose, Fitted or Stretched

Recommended Stocks: We use two beautifully crafted polyester materials for our table covers. Our loose and fitted table covers use the 260g SignWeave 100% Wrinkle free cross knitted polyester whilst our Stretch Table Covers use our incredibly smart latex tension fabric with the latest in Italian Ink technologies.

Printing Process: We also print using the latest in Mimaki Digital Printing Equipment with one of the best Dye Sub Heating plants, giving you sharp, clean and high-quality graphics for your table covers.

Standard Inclusions:

- Option of 3 or 4 sides printed.
- Machine or Hand Washable
- Long lasting and Durable
- Portable and light
- Professionally crafted and finished.

Minimum Order Quantity: 1

CORFLUTES

Corflutes are a great marketing product to use on a construction site, in a promotion or to launch a product. These can be used outdoors or indoors.



Specifications

Sizes: Corflutes can come in custom sizes in either 3mm or 5mm. Below are common sizings for corflutes.

- 300mm x 450mm x 5mm
- 450mm x 600mm 5mm
- 600mm x 1200mm x 5mm
- 900mm x 1200mm x 5mm

Orientation: Portrait, Landscape

Stocks: 3mm or 5mm Corflute

Printing: CMYK printing on 1 side

Finishing: Eyelets and corflutes cut to shape and supplied flat

Minimum Order Quantity: 1

MARQUEES

Our marquees are designed to be suitable for markets, events, camping, sales, schools, Corporate event, fetes, real estate auction days, trade shows, exhibitions and more.

Specifications

FRAME OPTIONS:

- Choice of three grades of Commercial Frames available
- Oztrail 3mx3m Commercial - 32mm high grade tent frame - Australia's No1 Seller
- First Class - High quality 40mm Hex Aluminium frame
- Platinum Class - Heavy duty 50mm Hex aluminium frame (RFQ Only)

SIZES:

- Available in three sizes:
- 3,000mm x 3000mm (Pricing table below)
- 4,500mm x 3,000mm (RFQ for Optional Extras)
- 6,000mm x 3,000mm (RFQ for Optional Extras)

SPECIFICATIONS:

- PU Coated for fire retardancy, UV and water resistant.
- Easy Set up with easy release mechanisms for Adjustable height
- Bonus oxford 400D quality Wheeled bag as well as tent pegs and ropes
- Vibrant colours with photographic quality
- 12 months warranty on the gazebo frame and fittings

Minimum Order Quantity: 1



LARGE FORMAT

SIGNAGE AND BOARDS

Utilising signage is a great way to keep your brand in front of your customer at all times. There are different materials that can be used for outdoor or indoor purposes.

Specifications

Sizes: A2, A3, A4, A5, A6, Custom Sizes

Orientation: Portrait, Landscape

Stocks: Vinyl, Polyester, Lustre, Alupanel, Canvas, Fabric, Corflute, PVC Foamboard

Stock Thickness: 3mm, 5mm custom thickness

Printing: CMYK, Spot Colour, Black and White, UV inks

Finishing: Flat packed

Minimum Order Quantity: 1





HEADER CARDS

Header Cards are used to label a product and are used in a retail environment to hang on a shelf or hook.

Specifications

Sizes: Custom Sizes Available

Orientation: Portrait, Landscape

Recommended Paper Stocks: Gloss, Matt, Barry Board

Recommended Paper Thickness: 200gsm, 250gsm, 300gsm, 350gsm

Printing: CMYK, Spot Colour, Black and White

Coating: Aqueous coating (gloss, matt or soft touch) machine varnish

Embellishing: Matt Cello, Gloss Cello, Non-scuff Matt Cello, Velvet Cello, Foil, Spot UV, Embossing

Finishing: Crease, Fold, Die cut to custom shape

Minimum Order Quantity: 100

Is there a template/Knife line?: Templates available on request

STRUT CARDS

Strut cards are a POS item typically used in a retail environment to promote a particular product or deal. These come in various sizes and can also hold catalogues and brochures.

Specifications

Sizes: DL, A6, A5, A4, A3, Custom Size

Orientation: Portrait, Landscape

Recommended Paper Stocks: Gloss, Matte, Uncoated Offset

Recommended Paper Thickness: Artboard 200 gsm, mounted to 1.6mm Showcard Board

Printing: CMYK, Spot Colour, Black and White

Coating: Aqueous coating (gloss, matt or soft touch) machine varnish

Embellishing: Matt Cello, Gloss Cello, Non-scuff Matt Cello, Velvet cello, Foil, Spot UV, Embossing

Finishing: Apply strut and supply flat packed

Minimum Order Quantity: 50

Is there a template/Knife line?: Templates available on request



SHELF WOBBLERS

Shelf wobblers are the ultimate in driving interest to your product. with clear call to actions or offers shelf wobblers can be the difference in what product is chosen, your or the competitors.

Shelf wobblers and shelf talkers are a simple yet very effective marketing product to set you apart.

Specifications

Sizes: Standard sizes & templates, & Custom Sizes

Orientation: Portrait, Landscape

Recommended Paper Stocks: Gloss Art 250gsm or Synthetic 250um

Printing: CMYK, Spot Colour, Black and White

Embellishing: Gloss Cello, Matt Cello, Spot Gloss UV

Finishing: Diecut to shape & Tape applied

Minimum Order Quantity: 100



SHELF STRIPS

Shelf strips are what are used on shelf edges to become as signage strip. They may be small, but they are also awesome eye-catching displays and a great sales tool. An opportunity of colour amongst a boring sea of grey supermarket shelving.

Use this shelf edge opportunity for:

- Shelf strips to market a new product
- Shelf strips for Impulse buys

Specifications

Sizes: Standard size: 42mm x Required Length Custom sizes as required

Orientation: Landscape

Recommended Paper Stocks: Synthetic 250um

Printing: CMYK

Finishing: Trim to size

Minimum Order Quantity: 100





POS DISPLAY CUBES

POS Display Cubes are a unique way to market and bring attention to your products in a retail environment and come in a number of different sizes.

Specifications

Sizes: Standard size : 185mm x 185mm x 185mm
Or Custom. Templates ready to go.

Recommended Paper Stocks: Carton Board

Printing: CMYK, Spot Colour, Black and White

Coating: Aqueous coating (gloss, matt or soft touch) machine varnish

Embellishing: Matt Cello, Gloss Cello, Non-scuff Matt Cello, Velvet Cello, Foil, Spot UV, Debossing

Finishing: Scored, Folded & Glued, Supplied flat

Minimum Order Quantity: 50

BOTTLE NECK TAGS

Bottle Neck Tags are an item used to have a branded message or image. Typically used in a retail environment on products to advertise a special or promotion.



Specifications

Sizes: DL, A6, A5, A4, A3, Custom Size

Orientation: Portrait, Landscape

Recommended Paper Stocks: Gloss, Matt, Uncoated

Recommended Paper Thickness: 90gsm, 100gsm, 120gsm, 130gsm, 150gsm, 170gsm, 200gsm, 250gsm, 300gsm, 350gsm

Printing: CMYK, Spot Colour, Black and White

Coating: Aqueous coating (gloss, matt or soft touch) machine varnish

Embellishing: Matt Cello, Gloss Cello, Non-scuff Matt Cello, Velvet cello, Foil, Spot UV, Embossing

Finishing: Scored, Folded, Perforated, Hole drilled, Die cut, Stripping

Minimum Order Quantity: 100

Is there a template/Knife line? Templates available on request

SWING TAGS

Swing Tags are used to label a product and are used in a retail environment to hang on a shelf or hook.

Specifications

Sizes: Custom Sizes Available

Orientation: Portrait, Landscape

Recommended Paper Stocks: Gloss, Matt, Barry Board, Synco

Recommended Paper Thickness: 200gsm, 250gsm, 300gsm, 350gsm

Printing: CMYK, Spot Colour, Black and White

Coating: Aqueous coating (gloss, matt or soft touch) machine varnish

Embellishing: Matt Cello, Gloss Cello, Non-scuff Matt Cello, Velvet Cello, Foil, Spot UV

Finishing: Scored, Folded, Perforated, Hole drilled

Minimum Order Quantity: 100

Is there a template/Knife line?: Templates available on request



WALLET AND POCKETS

Wallets and Pockets are a die cut, glued and assembled product that can be used to store other items in such as gift cards, membership cards or other components. They can also be used to store food related products.

Specifications

Sizes: DL, A6, A5, A4, A3, Custom Size

Orientation: Portrait, Landscape

Recommended Paper Stocks: Gloss, Matt, Uncoated

Recommended Paper Thickness: 90gsm, 100gsm, 120gsm, 150gsm, 170gsm, 200gsm, 250gsm, 300gsm, 350gsm

Printing: CMYK, Spot Colour, Black and White

Coating: Aqueous coating (gloss, matt or soft touch) machine varnish

Embellishing: Matt Cello, Gloss Cello, Non-scuff Matt Cello, Velvet Cello, Foil, Spot UV, Embossing

Finishing: Scored, Folded, Perforated, Hole drilled, Die cut, Stripping

Minimum Order Quantity: 100

Is there a template/Knife line?: Templates available on request





DOOR HANGERS

Door hangers are an item used to have a branded message or image on a door.

Specifications

Sizes: DL, A6, A5, A4, A3, Custom Size

Orientation: Portrait

Recommended Paper Stocks: Gloss, Matt, Uncoated

Recommended Paper Thickness: 90gsm, 100gsm, 120gsm, 130gsm, 150gsm, 170gsm, 200gsm, 250gsm, 300gsm, 350gsm

Printing: CMYK, Spot Colour, Black and White

Coating: Aqueous coating (gloss, matt or soft touch) machine varnish

Embellishing: Matt Cello, Gloss Cello, Non-scuff Matt Cello, Velvet cello, Foil, Spot UV, Embossing

Finishing: Scored, Folded, Perforated, Hole drilled, Diecut

Minimum Order Quantity: 100

RAFFLE TICKET

Raffle Tickets are an item used typically for fundraising purposes normally resulting in winning a prize and can be variable numbered for recording purposes.

RETAIL

Specifications

Sizes: DL, A6, A5, A4, A3, Custom Size

Orientation: Portrait, Landscape

Ticket Quantities per book: Typically in 25s, or 50s

Recommended Paper Stocks: Gloss, Matt, Uncoated

Recommended Paper Thickness: 90gsm, 100gsm, 120gsm, 130gsm, 150gsm, 170gsm, 200gsm, 250gsm, 300gsm, 350gsm

Printing: CMYK, Spot Colour, Black and White

Finishing: Variable Numbering, Scored, Folded, Perforated, Hole drilled

Minimum Order Quantity: 10 Books



STAMP

Replacement Rubbers - Replacement Ink Pads - Time & Date Stamps - Phrase Stamps - Numbering Stamps

Ink Colours: Black, Blue, Green, Red, Violet

Logos incur additional charges.



COLOP
self-inking stamps



Traditional Rubber Stamps



Xstamper
Pre-inked stamps

Specifications

Sizes: P10, P20, P30, P40, P50, P60, P15, P25, P45, S160 Or Custom.

Ink Colour: Black, Red, Blue, Green, Violet

Minimum Order Quantity: 1



CALENDARS

Calendars, when designed effectively are strong marketing tools that not only get your brand into your clients homes and workplaces, but also have them interacting with it on a daily basis.

Specifications

Sizes: A2, A3, A4, C4, Custom Size

Orientation: Portrait, Landscape

Page Numbers: 12 pages + cover and backing board if wire bound, 12 pages + cover and backing board if wire bound,

Recommended Paper Stocks: Gloss, Matt, Uncoated

Recommended Paper Thickness: Cover and Text: Gloss, Backboard: 90gsm, 100gsm, 120gsm, 130gsm, 150gsm, 170gsm, 200gsm, 250gsm, 300gsm, 350gsm

Printing: CMYK, Spot Colour, Black and White

Coating: Aqueous coating (gloss, matt or soft touch) machine varnish

Embellishing: Matt Cello, Gloss Cello, Non-scuff Matt Cello, Velvet Cello, Foil, Spot UV, Embossing

Binding: Wire bound, Saddle Stitched

Finishing: Scored, Folded, Perforated, Hole drilled, Hanger

Uses: Gifts, Presentation Purposes, End of year give aways

Minimum Order Quantity: 50

Is there a template/Knife line?: Templates for all calendar sizes are available on request

WALL PLANNERS

Wall Planners are a highly effective marketing tool to use for planning, sketching, and for use as a calendar. These are typically seen in the construction industry for onsite or in buildings to plan projects and timelines.

Specifications

Sizes: A2, A1, Custom Sizes

Orientation: Portrait, Landscape

Recommended Stocks: Matt, Gloss, Uncoated, Synthetic

Recommended Paper Thickness: 200gsm, 250gsm

Printing: CMYK, Spot Colour, Black and White

Embellishing: Matt Cello, Gloss Cello, Non-scuff Matt Cello, Velvet Cello

Finishing: Flat packed in mailing tubes

Minimum Order Quantity: 25



CALENDAR CORRUGATED PACKAGING

Corrugated packaging is such a versatile product offering, used and seen daily and is a great way to package calendars. These are a very durable product and is used as a branding tool while at the same time protecting the enclosed calendar from damage.

Direct Print – Corrugated Packaging.

Flexo printing is printed directly onto the corrugated board.

Laminated Print – Corrugated Packaging

High quality offset printed sheets are laminated onto a corrugated board, allowing for a high-quality print and embellishing options.

Specifications

Sizes: Templates & Custom Sizes to suit standard calendar sizes

Carton Styles: RSC – Regular Slotted Carton-Diecut-Custom Styles

Recommended Paper Boards: White or Brown

Recommended Paper Thickness: E-Flute – 1.5mm

D-Flute – 2.0mm

B-Flute – 3.0mm

C-Flute – 4.0mm

Printing: CMYK, Spot Colour, Black and White, Blank

Coating: Aqueous coating (gloss, matt or soft touch) machine varnish

Embellishing: Matt Cello, Gloss Cello, Non-scuff Matt Cello, Velvet cello, Foil, Spot UV, Debossing

Finishing: Scored, Folded, Perforated, Hole drilled

Minimum Order Quantity: 100





DIRECT MAIL

In an age of digital information overload, mail plays a unique role in the communications mix - as a highly effective way to reach current and prospective customers.

Specifications

Sizes: DL, DLX, C5, C4 or Custom Sized Envelopes

Orientation: Portrait, Landscape

Options: Plastic Wrap with Cover Sheet, Envelope, Stand Alone Items

Printing: Personalisation in black

Finishing: Address Envelope or Flysheet, Insert items into Envelope or Plastic Wrap, Sort and Lodge with AusPost

Australia Post Services: Unaddressed Mail, Presort Letter, Print Post, Promo Post, Charity Mail, Reply Paid, Acquisition Mail, Impact Mail

Minimum Order Quantity: 300



ENVELOPES INSERTING

We can insert up to 5 different brochures or cards into envelopes. Inserting can be into DL, DLX, C4 or custom sized envelopes.

Specifications

Sizes: DL, DLX, C4 or Custom Size Envelopes

Orientation: Portrait, Landscape

Finishing: All envelopes are packed up and put into labelled trays, ready to lodge with Australia Post.

Minimum Order Quantity: 250

PLASTIC WRAPPING

Plastic wrapping or flow wrapping is typically for when a catalogue or brochure needs to be sent out with a flysheet to a customer's database. Plastic wrapping keeps the product secure and protected.

Specifications

Sizes: DL, DLX, C4 or Custom Size Envelopes

Orientation: Portrait, Landscape

Finishing: All packs are packed up and put into labelled trays, ready to lodge with Australia Post.

Minimum Order Quantity: 250





FOLDING CARTON PACKAGING

Folding Cartons are used across a broad range of industries and products in unique and customisable ways.

Utilising a cardboard construction with different finishing options they can be used in:

- COSMETICS
- PHARMACEUTICAL
- BEVERAGE
- CONFECTIONERY
- FOOD
- HEALTHCARE

A complete range of FSC papers, recycled stocks and soy-based inks to comply, with Industry standards and ecofriendly requirements.

Specifications

Sizes: Templates & Custom Sizes

Carton Styles: Crash lock, Snap Lock, Tuck end

Recommended Paper Stocks: Coated & Uncoated

Recommended Paper Thickness: 200 - 400gsm
Paper Boards – Upto 450ums

Printing: CMYK, Spot Colour, Black and White

Coating: Laminated Print only (gloss, matt or soft touch)
machine varnish

Embellishing: Matt Cello, Gloss Cello, Non-scuff Matt Cello, Velvet cello, Foil, Spot UV, Embossing

Finishing: Variable Numbering, Scored, Folded, Perforated, Hole drilled

Minimum Order Quantity: 500

POCKETS

Cardboard Pockets in the FMCG segment are an impressive way to display your product. From shelf presentation to a hang sell these create a standout first impression to consumers.

With a complete range of FSC papers, recycled stocks and soy-based inks to comply with Industry standards and ecofriendly requirements.



Specifications

Sizes: Industry effective sizes – templates ready to go.
Custom Size & Shapes possible with our experienced team.

Recommended Paper Stocks: Kraft back Board

Printing: CMYK, Spot Colour, Black and White

Coating: Aqueous coating (gloss, matt or soft touch) machine varnish

Embellishing: Matt Cello, Gloss Cello, Non-scuff Matt Cello, Velvet cello, Foil, Spot UV, Embossing

Finishing: Scored, Folded & Glued

Minimum Order Quantity: 500

POUCH WRAPS

Cardboard pouch Wraps in the FMCG segment are an impressive way to display your product. From shelf presentation to a hang sell these create a standout first impression to consumers.

With a complete range of FSC papers, recycled stocks and soy-based inks to comply with Industry standards and ecofriendly requirements.

Specifications

Sizes: Industry effective sizes – templates ready to go.
Custom Size & Shapes possible with our experienced team.

Recommended Paper Stocks: White Coated or Kraft back Board

Printing: CMYK, Spot Colour, Black and White

Coating: Laminated Print only (gloss, matt or soft touch)
machine varnish

Embellishing: Matt Cello, Gloss Cello, Non-scuff Matt Cello,
Velvet cello, Foil, Spot UV, Embossing

Finishing: Variable Numbering, Scored, Folded, Perforated,
Hole drilled

Minimum Order Quantity: 500



SRPS – SHELF READY PACKAGING & RETAIL READY SHIPPERS

Creating an awesome first impression is essential in today's retail food packaging market. Retail Ready Shippers are an excellent way to present your product.

Shelf ready cartons can easily transform your shipper into retail ready display trays ready for consumer purchase.

A complete range of FSC papers, recycled stocks and soy-based inks to comply, with Industry standards and ecofriendly requirements.

Specifications

Sizes: Templates & Custom Sizes

Recommended Paper Stocks: Simcote Bleach Board 275gsm
(500um)

Printing: CMYK, Spot Colour, Black and White

Coating: Aqueous coating (gloss, matt or soft touch) machine varnish

Embellishing: Matt Cello, Gloss Cello, Non-scuff Matt Cello, Velvet cello, Foil, Spot UV, Embossing

Finishing: Die cut, Scored, & Glued

Minimum Order Quantity: 500





Features

- Integrated handle.
- Easy to erect in seconds.
- 100% recyclable and made from a renewable resource.
- Made bespoke to your product, marketing and supply chain requirements.
- Or utilise standard knife line templates.

Benefits

- Retail shelf presence and a premium brand presentation.
- Differentiate your product from the competitors.
- Improved consumer convenience as bottles easier to carry and transport.

BEVERAGE BOTTLE – CARRY

Bottle carriers are an excellent branding items and have a high visual impact on shelf.

Made from solid board with an integrated handle, bottle carriers are designed to safely carry between two and six bottles of the same, or mixed, size and shape.

Pre-glued and delivered flat, bottle carriers can be erected in seconds.

Suit different beverage applications: Beer, cider, kombucha and others.

Specifications

Sizes: Templates & Custom Sizes

Recommended Paper Stocks: 500 – 600 um Boards

Printing: CMYK, Spot Colour, Black and White

Coating: Aqueous coating (gloss, matt or soft touch) machine varnish

Embellishing: Matt Cello, Gloss Cello, Non-scuff Matt Cello, Velvet cello, Foil, Spot UV, Embossing

Finishing: Die cut, Scored, & Glued

Minimum Order Quantity: 1000



Features

- Finger holes cut out for carrying.
- 100% recyclable and made from a renewable resource.
- Made bespoke to your product, marketing and supply chain requirements.
- Or utilise standard knife line templates.
- High quality Offset print.

Benefits

- Retail shelf presence and brand presentation.
- Increased sales compared to sales of single bottles.
- Increased consumer convenience – easy to carry, remove and recycle.
- Environmentally friendly – uses minimal material.

CLUSTER & MULTIPACKS FOR BOTTLES

Cluster packs are solid board sleeves that wrap around multiple bottles, grouping them together for sale and providing a convenient carrying feature.

The cluster pack sleeve is strategically positioned around part or the whole of the bottle to create a large surface area to communicate and promote your brand or product. The sleeve carries high quality print to maximise brand impact on shelf and drive increased sales.

Specifications

Sizes: Templates & Custom Sizes

Recommended Paper Stocks: 500 – 600 um Boards

Printing: CMYK, Spot Colour, Black and White

Coating: Aqueous coating (gloss, matt or soft touch) machine varnish

Embellishing: Matt Cello, Gloss Cello, Non-scuff Matt Cello, Velvet cello, Foil, Spot UV, Embossing

Finishing: Die cut, Scored, & Glued

Minimum Order Quantity: 1000

PRESENTATION BOXES

Presentation Boxes appeal to clients, business partners, employees, customers and everyone in between. Whether simply as a storage vessel, a meaningful moment or a marketing tool, a luxury, branded Presentation Box is the ultimate way to secure more time and space in the receiver's mind by way of powerful and impactful presentation.

The most common uses for presentation boxes include –

- End of year gift boxes
- Thank you boxes
- Sales Presentation Packs
- Marketing Collateral Packs
- Product Sampling Kits

Specifications

Sizes: To fit items that are A4, A5 at various heights and custom sizes are also available.

Recommended Paper Stocks: 355gsm Board, E – Flute, Rigid Board

Printing: CMYK, Spot Colour, Black and White

Coating: Laminated Print only (gloss, matt or soft touch) machine varnish

Embellishing: Matt Cello, Gloss Cello, Non-scuff Matt Cello, Velvet cello, Foil, Spot UV, Embossing

Finishing: Die cut to Shape, Magnetic Catches, Supplied with foam on request at additional cost

Minimum Order Quantity: 50



DISPLAY CUBE

POS Display Cubes are a unique way to market and bring attention to your products in a retail environment and come in a number of different sizes.

Specifications

Sizes: Standard size : 185mm x 185mm x 185mm
Or Custom. Templates ready to go.

Recommended Paper Stocks: Carton Board

Printing: CMYK, Spot Colour, Black and White

Coating: Aqueous coating (gloss, matt or soft touch) machine varnish

Embellishing: Matt Cello, Gloss Cello, Non-scuff Matt Cello, Velvet Cello, Foil, Spot UV, Embossing

Finishing: Scored, Folded & Glued, Supplied flat.

Minimum Order Quantity: 50





MEAL SLEEVES FOR READY MEALS

Creating an awesome first impression is essential in today's retail food packaging market. Printed meal sleeves are an effective branding platform to achieve this.

Graphic design team with branding knowledge to help improve consumer engagement in store.

With design, sampling and fast production capability we will get your product instore with all product launches and order requirements.

A complete range of FSC papers, recycled stocks and soy-based inks to comply with Industry standards and ecofriendly requirements.

Specifications

Sizes: Industry effective sizes – templates ready to go.
Custom Size & Shapes possible with our experienced team.

Recommended Paper Stocks: Kraft back, White back - 245gsm

Printing: CMYK, Spot Colour, Black and White

Coating: Aqueous coating (gloss, matt or soft touch) machine varnish

Embellishing: Matt Cello, Gloss Cello, Non-scuff Matt Cello, Velvet cello, Foil, Spot UV, Embossing

Finishing: Scored, Folded & Glued

Minimum Order Quantity: 5000

LABELS FOR READY MEALS

Creating an awesome first impression is essential in today's retail food packaging market. Printed meal labels are an effective branding platform to achieve this. Utilise our Graphic design team with branding knowledge to help improve consumer engagement in store.

Labels used as standalone application or together with cardboard meal sleeves as:

- Container Branding labels (Container Lid or C Wrap Label application)
- Nutritional Information labels
- Meal Identification labels

With design, sampling and fast production capability we will get your product instore with all product launches and order requirements.

A complete range of label stocks, and soy-based inks to comply with Industry standards and ecofriendly requirements.

Specifications

Sizes: Industry effective sizes to suit containers and plastic tubs – templates ready to go.
Custom Size & Shapes possible with our experienced team.

Recommended Paper Stocks: Paper or PP (polypropylene)

Printing: CMYK, Spot Colour, Black and White

Finishing: Sheets or Roll

Minimum Order Quantity: 1000



CORRUGATED PACKAGING

Corrugated packaging is such a versatile product offering, used and seen daily. It has a huge range of applications from shelf ready packaging to shipping cartons, offering excellent product protection.

Some applications include:

- Shipping cartons
- Sample & presentation boxes
- Direct mailer boxes
- Retail product packaging

Direct Print – Corrugated Packaging.

Flexo printing is printed directly onto the corrugated board.

Laminated Print – Corrugated Packaging

High quality offset printed sheets are laminated onto a corrugated board, allowing for a high-quality print and embellishing options.

Specifications

Sizes: Templates & Custom Sizes

Carton Styles: RSC – Regular Slotted Carton
Diecut
Shelf Ready Tray
Custom

Recommended Paper Boards: White or Brown

Recommended Board Thickness: E-Flute – 1.5mm
D-Flute – 2.0mm
B-Flute – 3.0mm
C-Flute – 4.0mm

Printing: CMYK, Spot Colour, Black and White, Unprinted

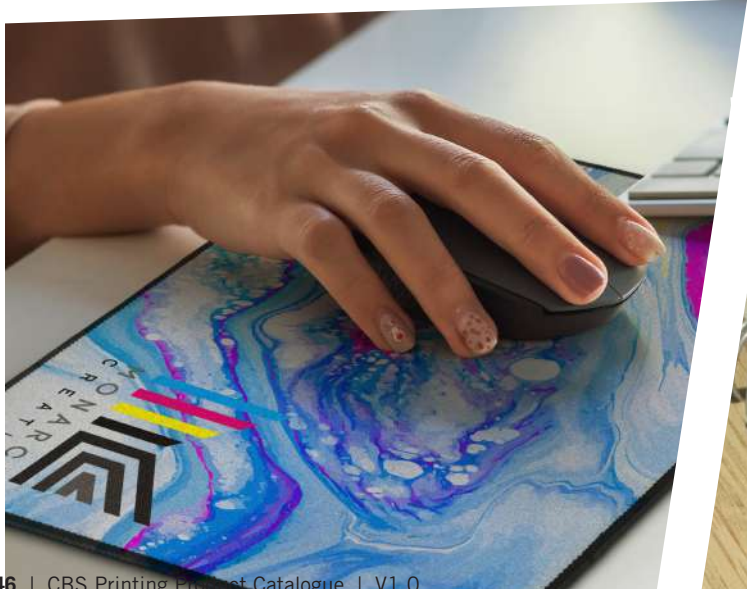
Coating: Laminated Print only - Aqueous coating (gloss, matt or soft touch) machine varnish

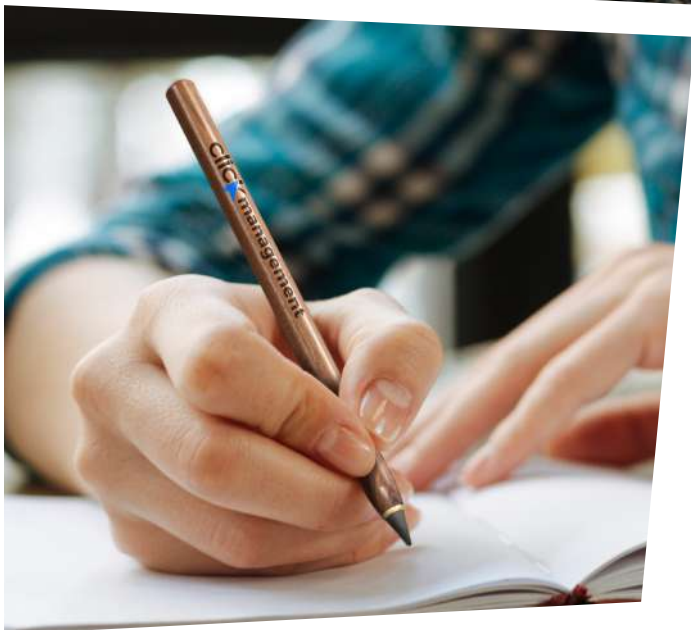
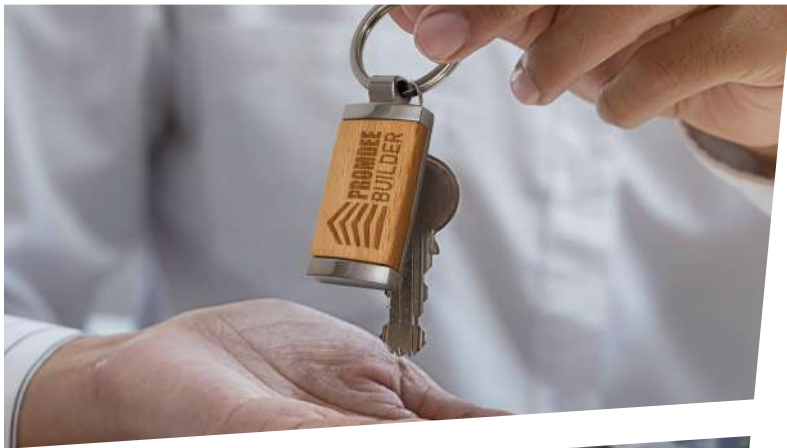
Embellishing: Laminated Print only - Matt Cello, Gloss Cello, Non-scuff Matt Cello, Velvet cello, Foil, Spot UV, Embossing

Finishing: Die cut, Scored, & Glued

Minimum Order Quantity: 100







**SCAN TO FIND OUT
MORE ABOUT
OUR PROMOTIONAL
PRODUCTS**



[Promo.cbsprinting.com.au](https://promo.cbsprinting.com.au)

Tradeshow Packages



We are your ONE-STOP-SHOP

for tradeshows/exhibitions/conferences/field days

At CBS Printing we realize that tradeshows / exhibitions / conferences / field days play a key part in companies' sales strategies. As a specialised supplier for marketing collateral and print for these events, we are here to make your show an easy, enjoyable, and rewarding experience.

We do this by:

- We provide ready to go Expo Print Packages
- We provide all products across: Display, Print and Promotional
- Provide express print and delivery services for last minute print & delivery.

STARTER

Item	Quantity
• Table Cloth	1
• Pull Up banner	1
• Business Cards	250
• Pens	500

PROFESSIONAL

Item	Quantity
• Table Cloth	1
• Media Wall	1
• Pull up Banner	1
• Caps	100
• Business Cards	250
• A4 Wiro Notebooks	250
• Keep Cups	250
• Pens	500
• A4 Brochure	500

ADVANCED

Item	Quantity
• Table Cover	1
• Media Wall	1
• Pull up Banner	1
• Business Cards	250
• A4 Wiro Notebooks	250
• Keep Cups	250
• Pens	500

DELUXE

Item	Quantity
• Table Cover	1
• Media Wall	1
• Pull up Banner	2
• Drink Bottles	100
• Caps	100
• Keep Cups	250
• A4 Wiro Notebooks	250
• Business Cards	250
• A4 Brochure	500
• Tote Bags	500
• Pens	500

ELITE

Item	Quantity	Item	Quantity
• Table Cover	1	• A4 Wiro Notebooks	250
• Media Wall	1	• A5 Notepads	250
• Pull up Banner	2	• Stress Hard Hat	250
• Tear drop Flag	2	• Keep Cups	250
• Drink Bottles	100	• Pens	500
• Caps	100	• A4 Brochure	500
• Wireless Charger	100	• Tote Bags	500
• Business Cards	250		

Want something specific?

Build Your Own Pack

Build your own pack by simply listing the items you want then contact us so we can get started in making your ideas into reality!

We Deliver Nationwide Across Australia



cbsprinting



Courier services are available via all major Australian courier companies and come with a tracking reference for your order via a delivery confirmation email when an order is dispatched from our warehouse.

Our dispatch team will arrange whatever transport is most effective for the particular delivery however we typically use Direct Freight Express for all pallets, skids and cartons nationwide and Australia Post for all mailing requirements. We also have a variety of other trusted couriers we use.

FAQS

General Artwork specifications

At CBS Printing we accept finished art as a print ready PDF (and in some cases the working files with all links and document fonts packaged) following these specifications:

Photos and Illustration resolution should be 300dpi
All colours converted to CMYK unless printing in PMS (no RGB, LAB etc)
Fonts should be embedded or outlined
Crop & bleed marks included
Minimum 3mm bleed (5mm for booklets)

General Design Tips

Text and non-bleed images should always be kept at least 3mm from the trim line.

Folding & Scoring

To minimise cracking on folded jobs, we recommend scoring the fold lines.

Rich Blacks

We strongly recommend you use CMYK Rich Black on large areas of black to ensure a nice solid result. A good mixture for CMYK Rich Black on;

Heavier stock weights use 60 / 40 / 40 / 100
Lighter stock weights use 30 / 0 / 0 / 100

Storage of Artwork

PDF's will remain on our system for when you require a reprint of your artwork.

Book Artwork Setup

Please ensure you supply your artwork to us as individual pages in the PDF, not as spreads e.g. a 16pp booklet should be supplied as one PDF with 16 pages.

CBS Printing's pre-press experts will impose the booklet for you. Allow a minimum of 5mm bleed on all edges. Booklet "creep" will occur during finishing so we recommend you keep text and non-bleed images at least 10mm from the trim line.

Spot UV Setup

Spot UV can provide a premium result when highlighting a logo, image or bold type by applying these areas with a gloss varnish, or applied as an overprinted pattern over solids for a more creative result. When supplying final artwork which requires Spot UV, artwork should be supplied with an extra PDF file which contains all Spot UV elements set as a Spot Colour named 'Spot UV'. It is important to make sure that this 'Spot layer' exported PDF file is identical in all respects to (size, orientation, crop, position of images and text etc.) to your original CMYK artwork.

Things to Avoid

UV varnish can sometimes shift slightly when applied. Avoid applying UV to thin lines, small text or finely detailed artwork.

How to Setup Your Files

- Open your artwork in Indesign.
- Create a new layer for the Spot UV application.
- Select the elements you wish to enhance with Spot UV and duplicate them to the new Spot UV layer.
- Create a NEW colour swatch and name it "Spot UV".
- Select colour type "Spot Colour", and convert all Spot UV elements to this new spot color.
- Spot UV elements should all be set to 100% Opacity.
- IMPORTANT – Select all graphics on the Spot UV layer and set them to "Overprint Fill" in the Attributes palette (Window/Output Attributes).
- Select "Overprint Preview" from the 'View' menu to CHECK your work.
- Export the Spot UV layer – by turning off all layers except the new Spot UV layer, then export as a single PDF with all trim marks.
- Proceed to export the CMYK file by turning off the Spot UV layer, then export all CMYK layers with trim marks.

Foil Setup

Foil can provide a premium Luxuries result when used with images or bold type by applying these areas with the reflective/shiny application, or applied as an overprinted pattern over solids and images for a more creative high end result. When supplying final artwork which requires Foil, artwork should be supplied with an extra PDF file which contains all Foil elements set as a Spot Colour named 'Foil'. It is important to make sure that this 'Spot layer' exported PDF file is identical in all respects to (size, orientation, crop, position of images and text etc.) to your original CMYK artwork.

Things to Avoid

Foils can sometimes shift slightly when applied. Avoid applying foil to thin lines, small text or finely detailed artwork

How to Setup Your Files

- Open your artwork in Indesign.
- Create a new layer for the Foil application.
- Select the elements you wish to enhance with Foil and duplicate them to the new Foil layer.
- Create a NEW colour swatch and name it "Foil".
- Select colour type "Spot Colour", and convert all Foil elements to this new spot color.
- Foil elements should all be set to 100% Opacity.
- IMPORTANT – Select all graphics on the Foil layer and set them to "Overprint Fill" in the Attributes palette (Window/Output Attributes).
- Select "Overprint Preview" from the 'View' menu to CHECK your work.
- Export the Foil layer – by turning off all layers except the new Foil layer, then export as a single PDF with all trim marks.
- Proceed to export the CMYK file by turning off the Foil layer, then export all CMYK layers with trim marks.

White Ink Setup

White ink can provide a premium result when used on dark stock. It looks great with intricate line work like architectural plans which produces a creative result. White ink can also be used as a base for coloured ink to be overprinted when using a colour paper stock. When supplying final artwork which requires White ink, artwork should be supplied with an extra PDF file which contains all White ink elements set as a Spot Colour named 'White ink'. It is important to make sure that this 'Spot layer' exported PDF file is identical in all respects to (size, orientation, crop, position of images and text etc.) to your original CMYK artwork.

Things to Avoid

White ink when used as a base then overprinted sometimes shifts. To help this making the white ink elements 0.5mm smaller can sometimes help avoid this.

How to Setup Your Files

- Open your artwork in Indesign.
- Create a new layer for the White ink application.
- Select the elements you wish to enhance with White ink or used as a base and duplicate them to the new White ink layer.
- Create a NEW colour swatch and name it "White ink".
- Select colour type "Spot Colour", and convert all White ink elements to this new spot color.
- White ink elements should all be set to 100% Opacity.
- **IMPORTANT** – Select all graphics on the White ink layer and set them to "Overprint Fill" in the Attributes palette (Window/Output Attributes).
- Select "Overprint Preview" from the 'View' menu to CHECK your work.
- Export the White ink layer – by turning off all layers except the new White ink layer, then export as a single PDF with all trim marks.
- Proceed to export the CMYK file by turning off the White ink layer, then export all CMYK layers with trim marks.

Die cutting Setup

We recommend using a dieline from our extensive range of templates. If you require a custom diecut, please contact us directly. If you choose to create your own die, it is best practice to create your dieline, mock it up and test it before laying out your artwork. Then repeat that process when the artwork is complete.

Especially with packaging and presentation folders, this is particularly important as elements such as pockets require gussets to allow for inserted material. Closure folds and tabs also require careful engineering to serve their purpose.

International Paper Sizes

International Paper Sizes are a standardised system of related sheet sizes, based on a series of three different sizes called A, B or C - all of the same proportions.

All sizes have the rectangular proportion of 1: $\sqrt{2}$ (or 1: 1414) which is mathematically unique - no other size allows paper to be cut, or folded, in half and yet retain the same proportion.

Because these proportions always remain constant, artwork will enlarge or reduce photographically to fit any International Size. It is also not necessary to give dimensions of paper, as descriptions such as A4 or A3 are in use universally.

Definition of weight, or "substance", of paper is expressed in constant terms as "grammes per square metre" (or gsm); if a sheet of A0 paper weighs 90 grammes it is then described as "90 gsm", regardless of the actual size of the sheet.

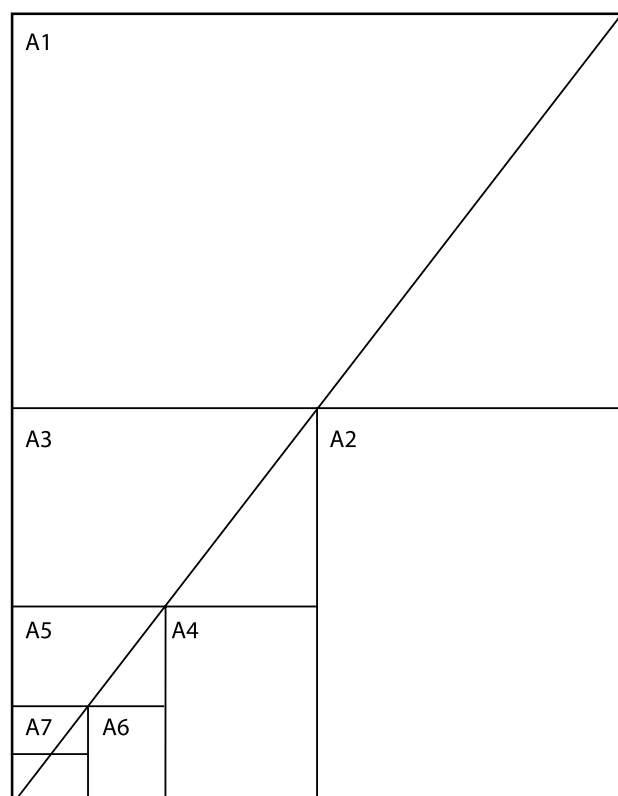
The A Series

The series is for general printed matter including stationery and publications. The basic standard sheet. A0 measures 841 x 1189mm which is the equivalent of a square metre in area. Each number after the series initial A indicates a halving of the preceding larger area.

Thus A 1 is half of A0, A2 is one-quarter of A0, A3 is an eighth of the A0 sheet area, etc. Sheet sizes larger than A0 retain the same proportions and a designating numeral is prefixed to the letter. Thus 2A0 indicates a sheet twice as large as A0.

size	millimetres	size	millimetres
4A0	1682 X 2378	A4	210 X 297
2A0	1189 X 1682	A5	148 X 210
A0	841 X 1189	A6	105 X 148
A1	594 X 841	A7	74 X 105
A2	420 X 594	A8	52 X 74
A3	297 X 420	A9	37 X 52

All of the above A sizes are trimmed sizes.



The B Series

The B series is about half way between two A sizes. It is intended as an alternative to the A sizes, used primarily for books, posters, wall charts and similar pieces where the difference in size of the larger sheets in the A series represents too large a jump.

size	millimetres	size	millimetres
B0	1000 X 1414	85	176 X 250
81	707 X 1000	86	125 X 176
82	500 X 707	87	88 X 125
83	353 X 500	88	62 X 88
84	250 X 353	89	44 X 62

The C Series

The C series is used for folders, post cards, and envelopes. The C series of envelope sizes is suitable for insertion of A series sizes either flat or folded. A C6 envelope will take A6 sheet flat, an A5 folded once, or an A4 sheet folded twice.

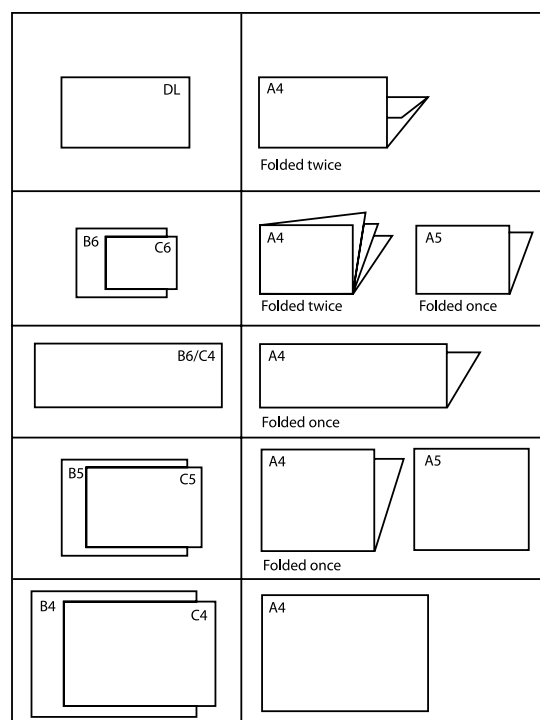
size	millimetres	size	millimetres
C0	917 X 1297	C4	229 X 324
C1	648 X 917	C5	162 X 229
C2	458 X 648	C6	114 X 162
C3	324 X 458	C7	81 X 114

International Envelope Sizes

The full list of ISO envelope sizes is shown below. All are from the B or C sheet sizes with the exception of one designated

DL (DIN Lang).

size	millimetres	size	millimetres
C3	324 X 458	86	125 X 176
84	250 X 353	C6	114 X 162
C4	229 X 324	DL	110 X 220
85	176 X 250	DLX	120 X 235
C5	162 X 229	C7/6	81 X 162
C5	162 X 229	C7	81 X 114
B6/C4	324 X 176		



Sustainability Policy

Introduction

At CBS Print Group Pty Limited, we understand the importance of sustainable practices and keeping the environment safe and we have this front of mind in all our operations. CBS Print Group Pty Limited aspires to minimise its impact on our environment and maximise the effective use of resources. We strive to achieve this by increasing communication and awareness of our efforts in accordance with this policy and fostering responsible environmental behaviour amongst staff, suppliers, and users at all levels.

Purpose

This Environmental Sustainability Policy aims to integrate a philosophy of sustainable development into all the organisation's activities and to establish and promote sound environmental practice in our operations.

Policy

CBS Print Group Pty Limited commits itself to minimizing its impact on our environment through

1. Smart Environment friendly purchasing
 - Soy Based Inks – replaced the alternative old-style ink options of Toxic based Chemical Inks. Soy based is a pure and eco-friendly solution within the print manufacturing process
 - FSC Papers – CBS Print Group sources carbon neutral solutions
 - Recycled Paper stocks & Cards
2. Having an environmentally sustainable aware culture,
3. Conserving natural resources by reusing and recycling;
 - Paper - We run an efficient and consistent recycling program with our waste management partners on all discarded paper stocks and cards. Ensuring 100% of all paper waste is recycled through qualified professionals with commercial recycling facilities instead of going into landfill
 - Inks – Our ink drums used on our digital machine are returned to the supplier for recycling
 - Plates – Our printing plates are stored and recycled
 - Workplace is plastic bottle free environment, with all staff provided drink bottles.
4. Ensuring the responsible use of energy throughout the organisation;
 - Solar Panels - The office & operations facility is powered by 260 Solar Panels – 70KW system generating 75% of the overall power used at CBS Print Group
5. Taking steps to improve environmental performance continually;
 - Running the latest versions of print manufacturing technology and software, which we are continually working to reduce the amount of wastage and reduce our carbon footprint.
6. Working with suppliers who promote sound environmental practices

Bank / Company Details

Please find below our company details. If you require any further information or have any questions, please don't hesitate to contact the office on 1300 021 021.

Company Details

Legal Name:	CBS Print Group Pty Limited
Trading Name:	CBS Printing Pty Ltd
ABN:	36 612 708 611
Physical Address:	5 Waler Crescent, Smeaton Grange, NSW, 2567
Phone:	1300 021 021

Account Contact Details

Contact:	Danna Lacaba
Email:	accounts@cbsprinting.com.au
Phone	1300 021 021

Bank Details

Bank:	Commonwealth Bank
BSB:	062 656
Account No.:	1035 2787
Remittance to:	accounts@cbsprinting.com.au

We offer our customers 30 day EOM account terms, once we receive a completed credit application.



COMMERCIAL

Todd Wilson

Sales Manager

M: 0488 065 933

E: todd@cbsprinting.com.au

Tania Laws

Account Manager

M: 0408 882 252

E: tania@cbsprinting.com.au

Jason Knight

Account Manager

M: 0402 304 345

E: jason@cbsprinting.com.au

Malcolm Wilson

Account Manager

M: 0437 449 454

E: malcolm@cbsprinting.com.au

Maylene Castillo

Customer Service Manager

M: +61 280 392 731

E: maylene@cbsprinting.com.au

Joshua Wilson

Business Development Manager

M: 0437 960 532

E: joshua@cbsprinting.com.au

Lisa Milinkovic

Account Manager

M: 0411 885 206

E: lisa@cbsprinting.com.au

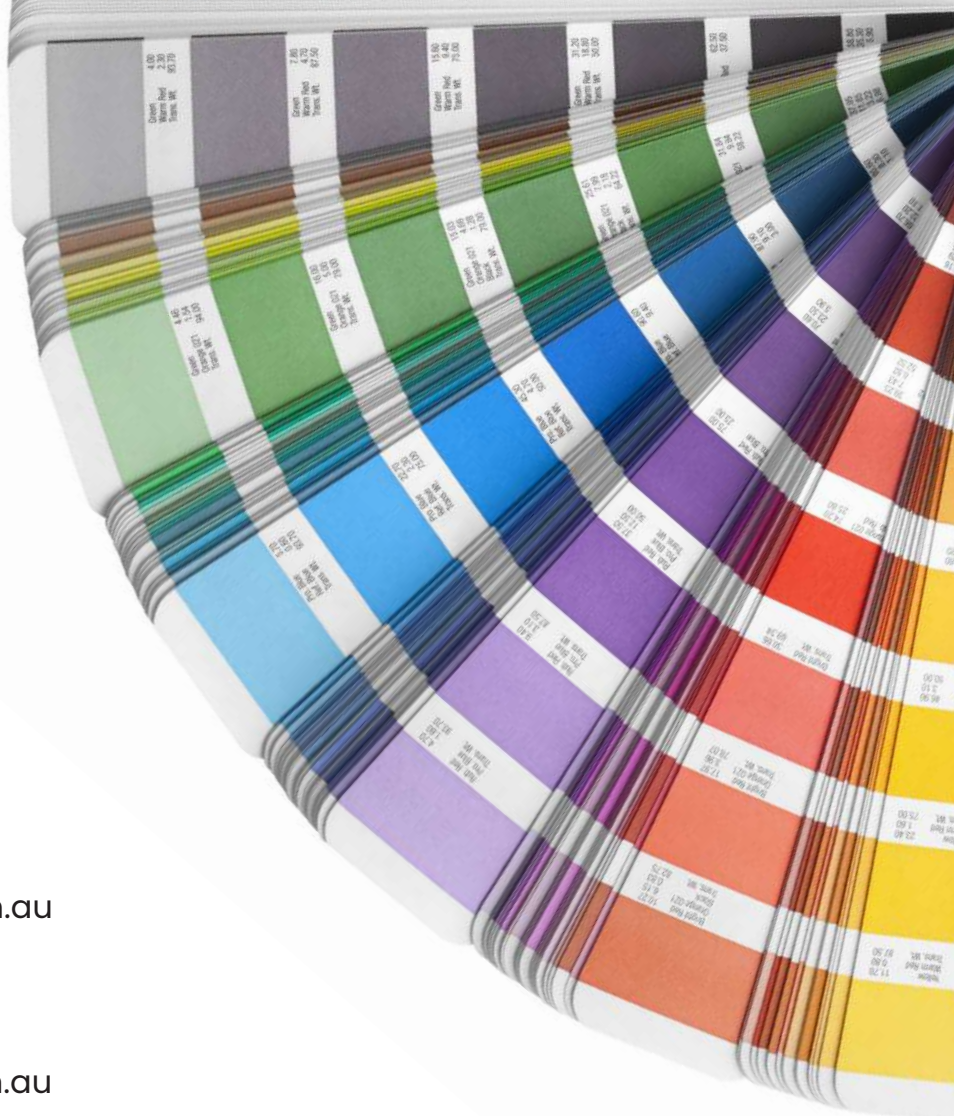
Office

P: 1300 021 021

E: sales@cbsprinting.com.au

A: 5 Waler Crescent, Smeaton Grange, NSW, 2567

PACKAGING



www.cbsprinting.com.au